

Lockwell Double Station Vise



Clamping Force Equalization & Automatically Return Mechanism

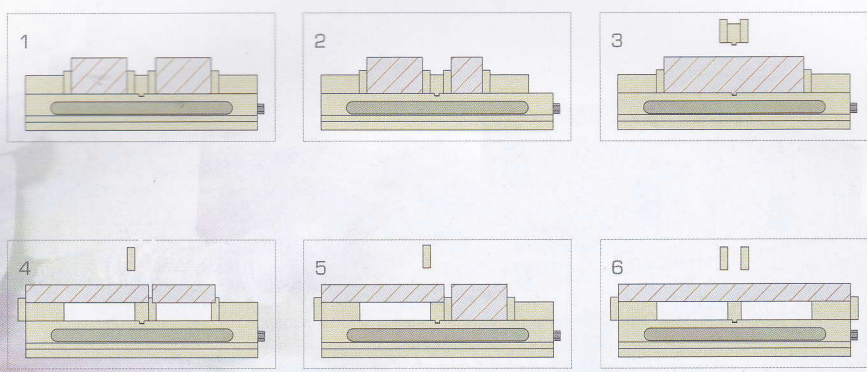
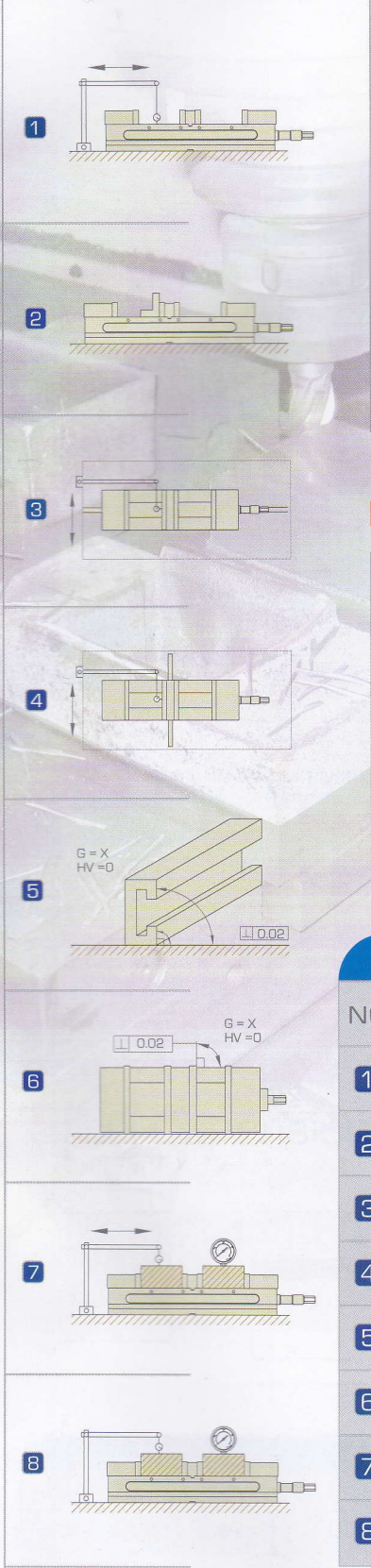
Lockwell Double Station Vise increases the efficiency and productivity of CNC machine. Double station could clamp two dissimilar workpieces with same force at a time. For save time, movable jaw designed to automatically return to correct position. One of the movable jaws opened while the other one opened to the position you set. Moreover, double station could be change to single station to meet your enquiry by fixed one movable jaw. 6 different clamping positions. You could change the standard jaws into soft jaws to make your own vise.

- Double station could clamp two dissimilar workpieces with same force at a time and provides 6 different clamping positions.
- Clamping Force Equalization (patented) ensures same clamping force to clamp two different size/shape workpieces.
- Automatically Return Mechanism (patented) save the work change time.
- Lockwell Anti-Lift Mechanism (patented) ensures the workpiece does not deflect and lift.

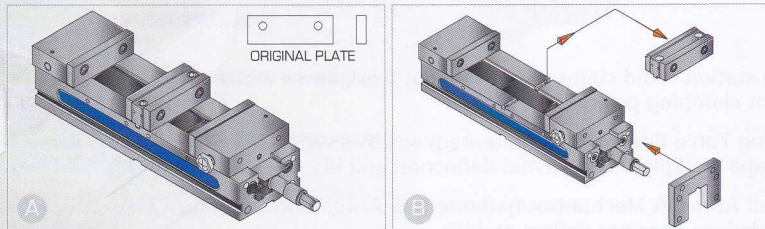


Static Accuracy

6 Different Clamping Positions



Change Sample of Station



Using the current vise opening when the workpiece dimension is between 0-125mm & 0-90mm.

Taking out the fixed jaw and insert a movable plate (tighten by 6pcs screws) when the workpiece dimension is between 125-315mm (4.98"-12.3").

DOUBLE CLAMP VISE System

NO	Inspection Items (Per 100 mm)		Allowance (mm)	
			Auto Well	JIS. Class
1	Parallelism	running face to bottom of bed	0.01	0.015
2	Squareness	between running face and jaw plate	0.01	0.03
3	Squareness	keyways on bottom of bed to jaw plate	0.015	0.02
4	Parallelism	keyways on bottom of bed to jaw plate	0.01 for total jaw height	0.02
5	Squareness	both sides to running face	0.02	0.02
6	Squareness	both sides to fixed jaw plate	0.02	0.02
7	Parallelism	running face of the test block to bottom of bed	0.015	0.02
8	Parallelism	lift can be controlled when clamping test	0.015	0.03

*Basic on global market, our company start producing MC serious type of vise on 1986 and we keep our vise dimensions as same since then. There is no fitment or alignment problem between our old and new MC vise.

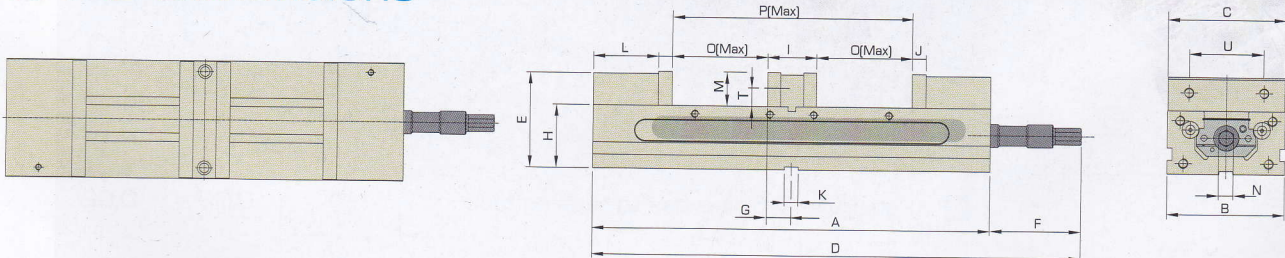
NEW Lockwell Double Station Vise

TLD-40, 60G/HV *Workholding*



- ❑ Double station could clamp two dissimilar workpieces with same force at a time and provides 6 different clamping positions.
- ❑ Clamping Force Equalization (patented) ensures same clamping force to clamp two different size/shape workpieces and avoid deflection and lift.
- ❑ Lockwell Anti-Lift Mechanism (patented) & Automatically Return Mechanism (patented) ensures the workpiece does not deflect and lift.
- ❑ Rigid and tensile ductile iron FCD-60 (80,000PSI) vise body. Slide surface flame hardened to HS65° to maintain the accuracy. S50C jaw-plate has been Carburizing heat treated the hardness to HRC54°.
- ❑ Unique design facilitates the evacuation of chips.
- ❑ U.S.A. patented.

❑ TLD Dimensions



TLD DIMENSIONS																mm/kg			
NO	A	B	C	D	E	F	G	H	I	J	K	L	M	N	O	P	T	U	Weight
TLD-40G/HV	405	104	102	459	96.5	54	27.5	63.5	55	15	18	69	38	14	90	235	17.5	63.5	20kg
TLD-60G/HV	520	154	152	536	124.05	16	33	82.55	66	18	18	86.5	44.5	19	125	316	23.8	98.4	52kg